

6 Preston Close Eccles, Manchester, M30 0DJ

**** A CHARMING LINK DETACHED RESIDENCE OCCUPYING A POPULAR CUL DE SAC LOCATION **** This spacious family home is tucked away in a quiet position at the bottom of a cul de sac and presents an excellent opportunity for families seeking a home with great potential. Boasting three well-proportioned bedrooms, it would be ideal for those looking to put down roots in a highly attractive location close to Monton Village with its selection of excellent shops, cafes, and restaurants. Additionally, the property is well-connected to transport links and close to a number of highly regarded schools and Salford Royal Hospital. The two reception rooms offer ample space for relaxation and entertaining, making it a perfect setting for family gatherings. While the property is in need of modernisation, it allows for the new owners to personalise and enhance the space to their taste. The front and rear gardens provide a delightful outdoor area for children to play and for gardening enthusiasts. Parking is a significant advantage here, with a driveway providing off road parking for 3/4 vehicles and although the garage may not be large enough for modern vehicles, it offers additional storage space. Viewings highly recommended. No onward chain. EPC rating C.

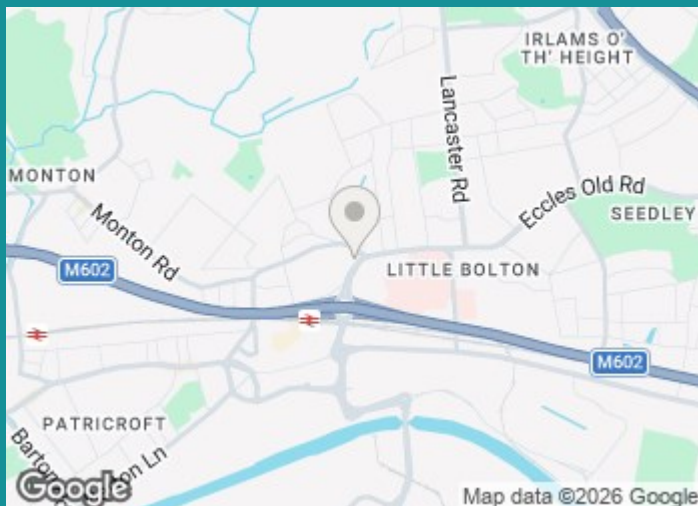
Asking Price £325,000

6 Preston Close

Eccles, Manchester, M30 0DJ



- POPULAR CUL DE SAC LOCATION
- SPACIOUS LINK DETACHED RESIDENCE
- DOWNSTAIRS W.C.
- EXCELLENT FAMILY HOME WITH PLENTY OF POTENTIAL
- TWO DOUBLE BEDROOMS + SINGLE BEDROOM
- DRIVEWAY & GARAGE
- SURROUNDED BY EXCELLENT AMENITIES, TRANSPORT LINKS & SCHOOLS
- REQUIRES MODERNISATION
- WELL MAINTAINED FRONT AND REAR GARDENS
- A SHORT WALK FROM MONTON VILLAGE

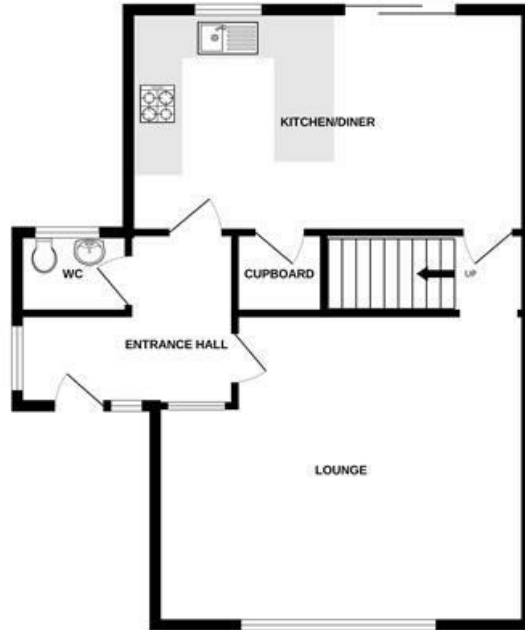


Directions

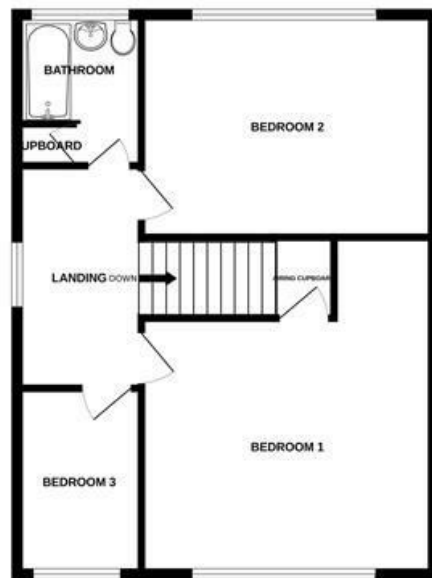


Floor Plan

GROUND FLOOR



1ST FLOOR
Kaytons
 estate agents



Whilst every attempt has been made to ensure the accuracy of the floorplan contained here, measurements of doors, windows, rooms and any other items are approximate and no responsibility is taken for any error, omission or mis-statement. This plan is for illustrative purposes only and should be used as such by any prospective purchaser. The services, systems and appliances shown have not been tested and no guarantee as to their operability or efficiency can be given.
 Made with Metropix ©2026

These particulars, whilst believed to be accurate are set out as a general outline only for guidance and do not constitute any part of an offer or contract. Intending purchasers should not rely on them as statements of representation of fact, but must satisfy themselves by inspection or otherwise as to their accuracy. No person in this firm's employment has the authority to make or give any representation or warranty in respect of the property.

